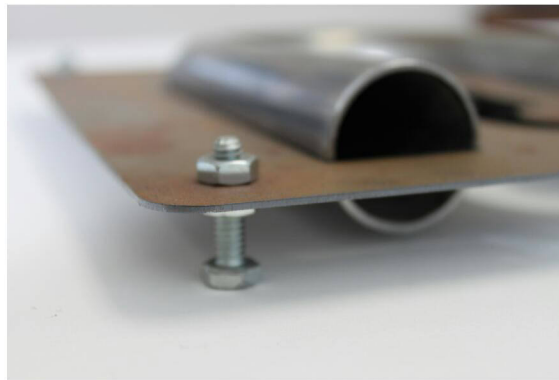


# How to use the Cone Engineering U-Bend Cutting Fixture



**The first step is to install nuts and bolts in the four corners and center of the fixture. You want to have the fixture in about the midpoint of the bend height for easiest and most accurate marking. You can also bend the corners of the fixture to the proper height but find the nuts and bolts the easiest way to get it right.**



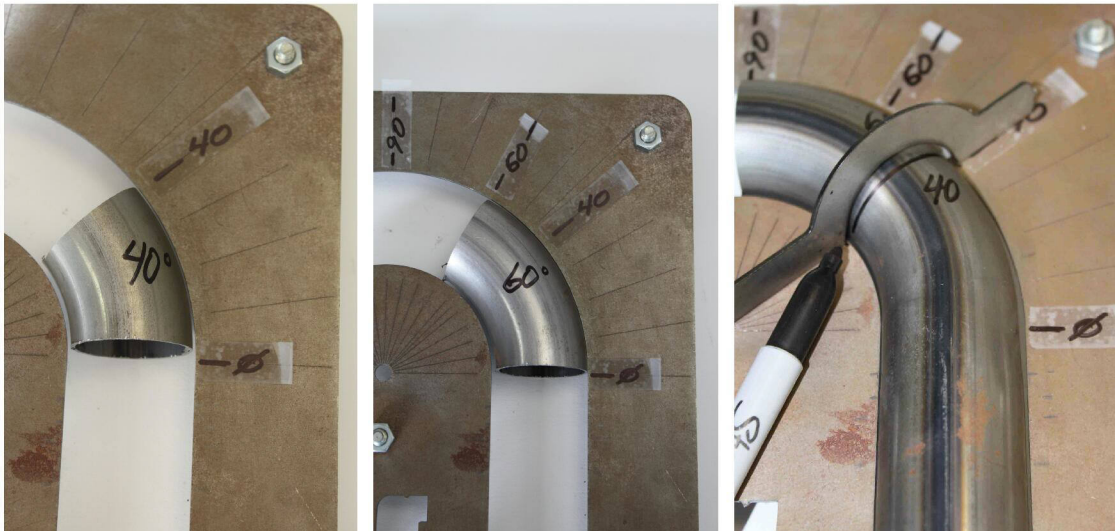
**Now you'll want to remove the miter tool in the center of the fixture. Keep the miter perpendicular to the tube when you mark it to increase accuracy of your cut.**



Now all you need to do is drop the u-bend into the fixture (Our fixtures match the radius of the bends we offer, so larger and smaller radius bends would not fit into the fixture properly). After marking the bend with a pencil, marker or scribe, simply cut along your mark.



A great feature of this cutting tool is that you can drop scrap cuts into the fixture and determine what angle they were cut at. You can square up these scraps and cut them off again to a new angle to reuse them and cut waste.



When you are all finished tape the miter arm back onto the main fixture so the next time you need it, you'll know right where you left it. Uh huh...

You'll find these listed in the Collector and Fabrication Components section of the website along with several other great reusable tools like our Collector Alignment Tools. The U-Bend cutting fixtures retail for \$25.00 or you can get 4 different sizes for \$80. You can also add them into a collector kit order and save 10% off.